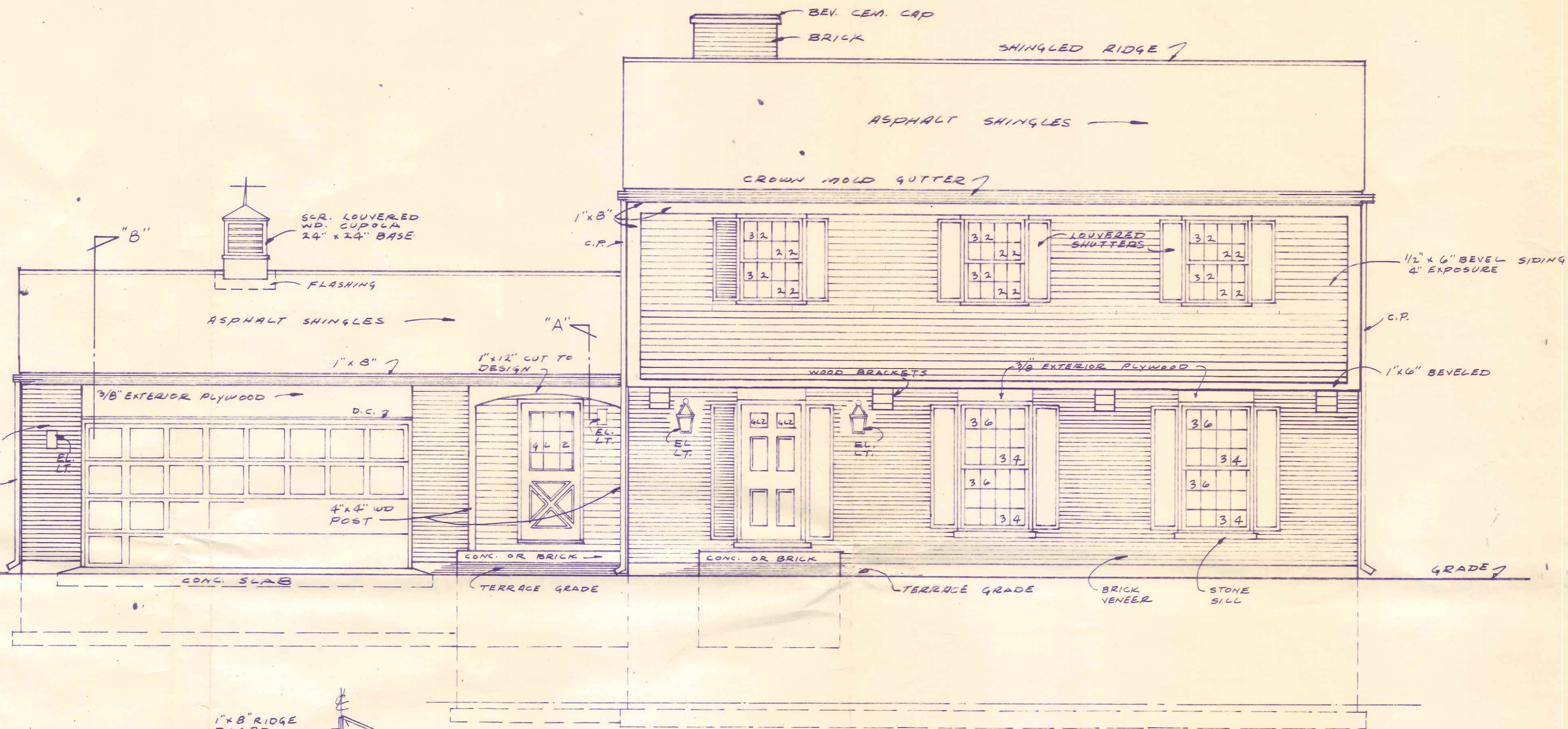


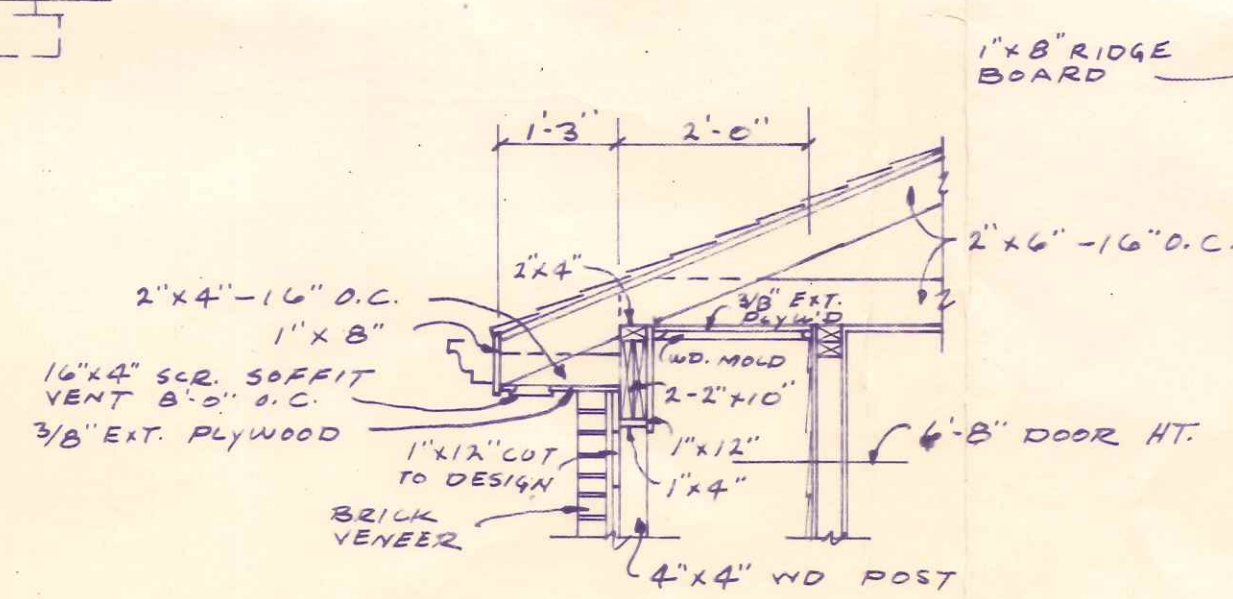
LEFT SIDE ELEVATION

SCALE 1/4" = 1'-0"



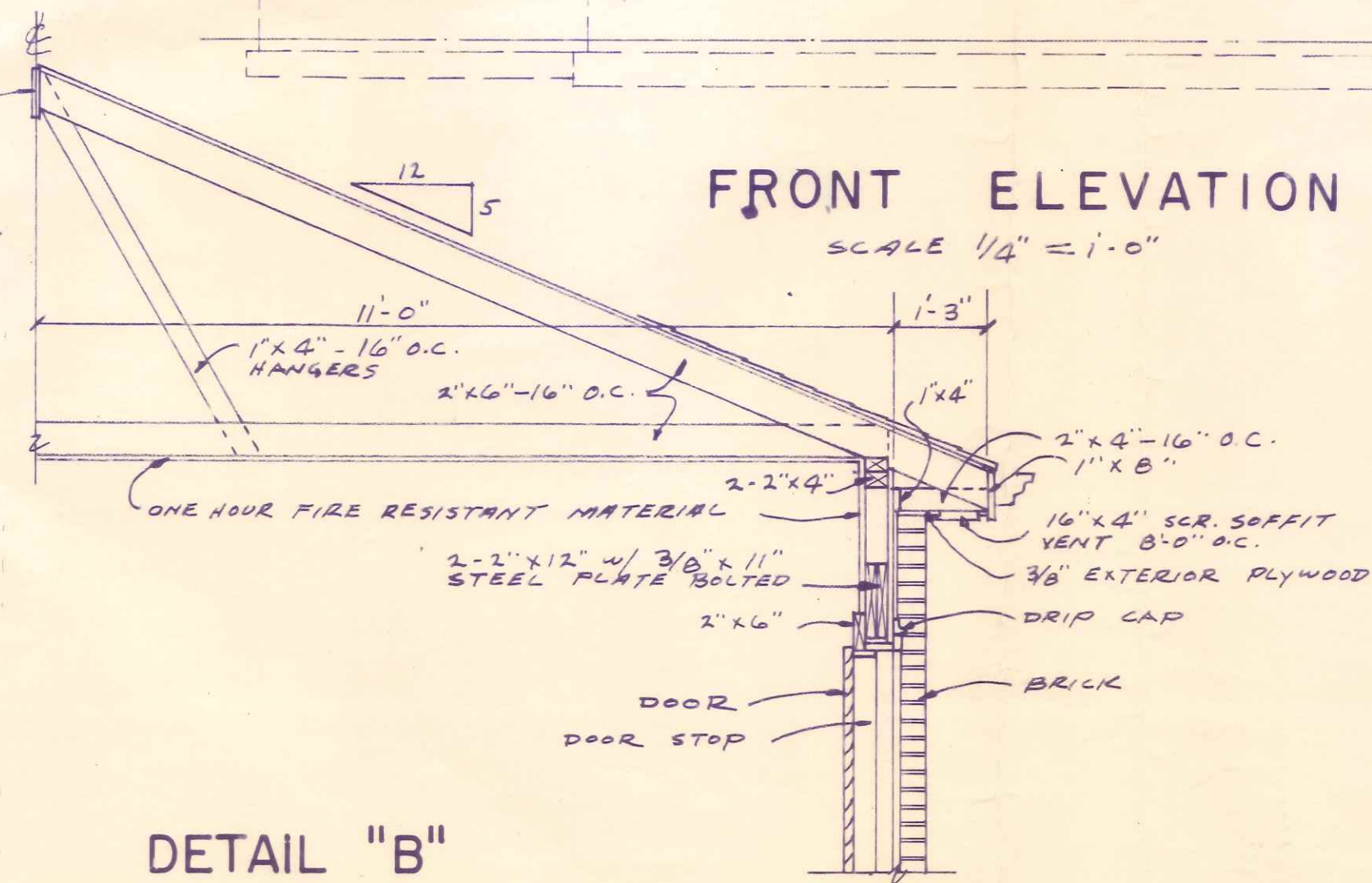
FRONT ELEVATION

SCALE 1/4" = 1'-0"



DETAIL "A"

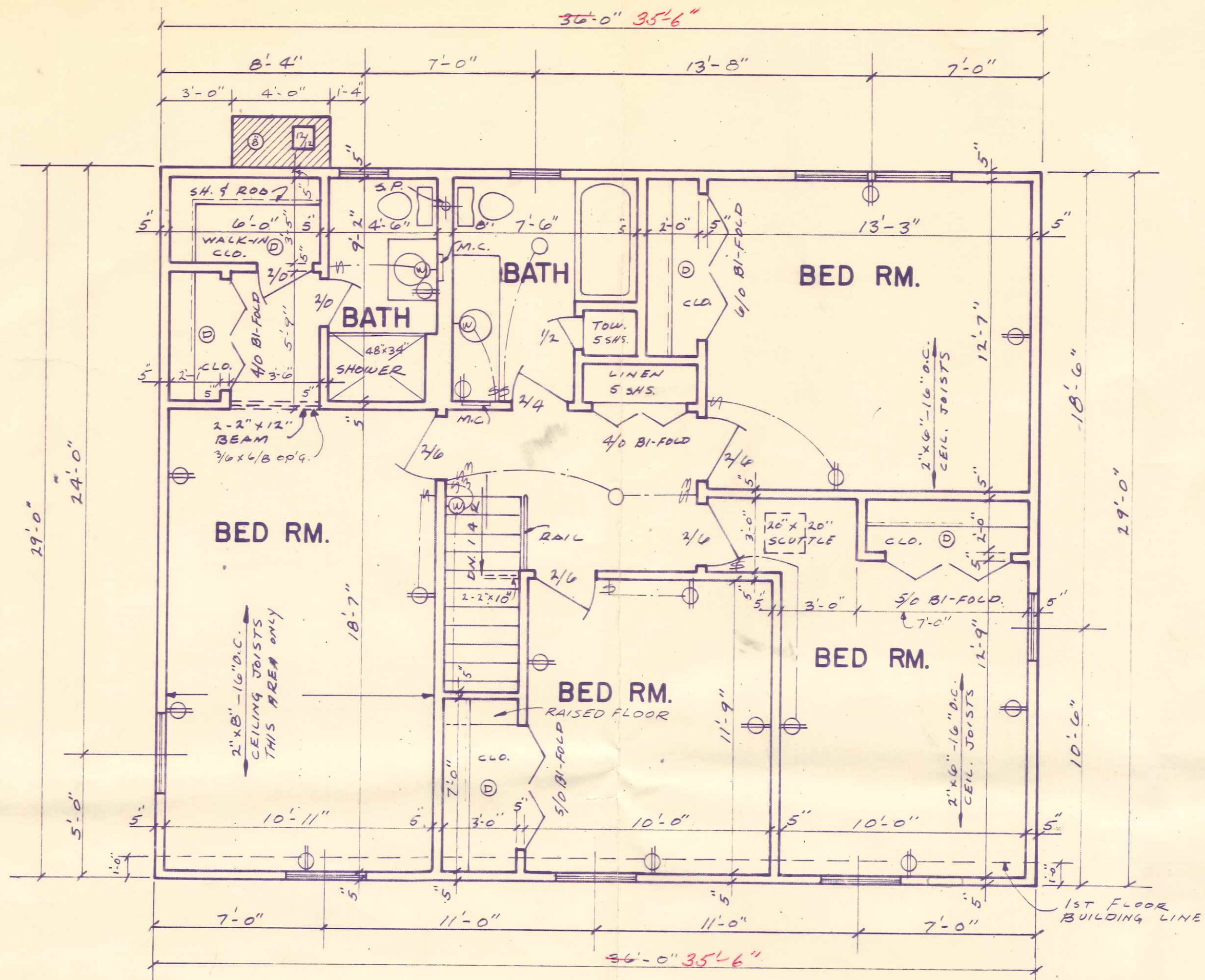
SCALE 1/2" = 1'-0"



DETAIL "B"

SCALE 1/2" = 1'-0"

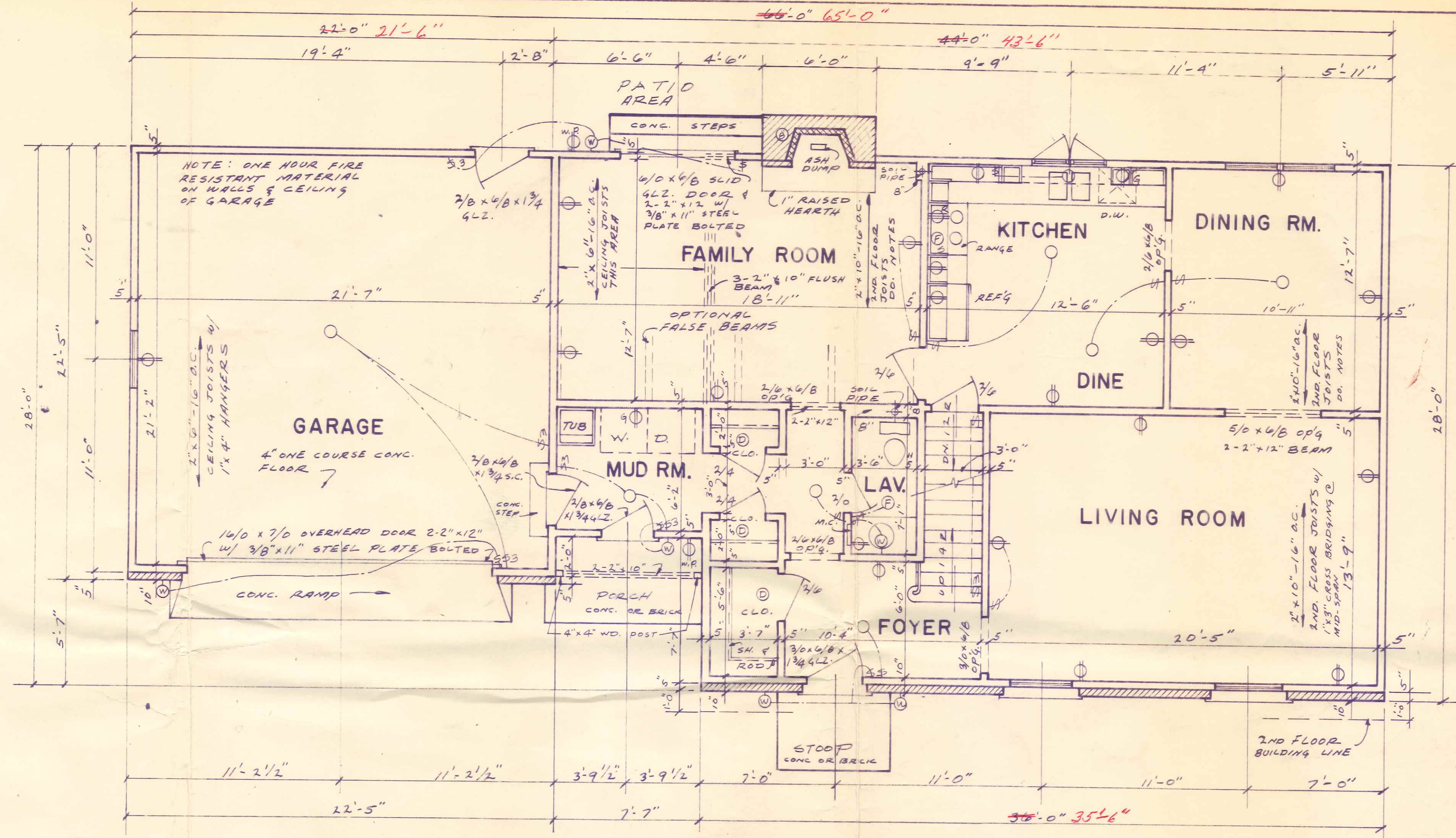




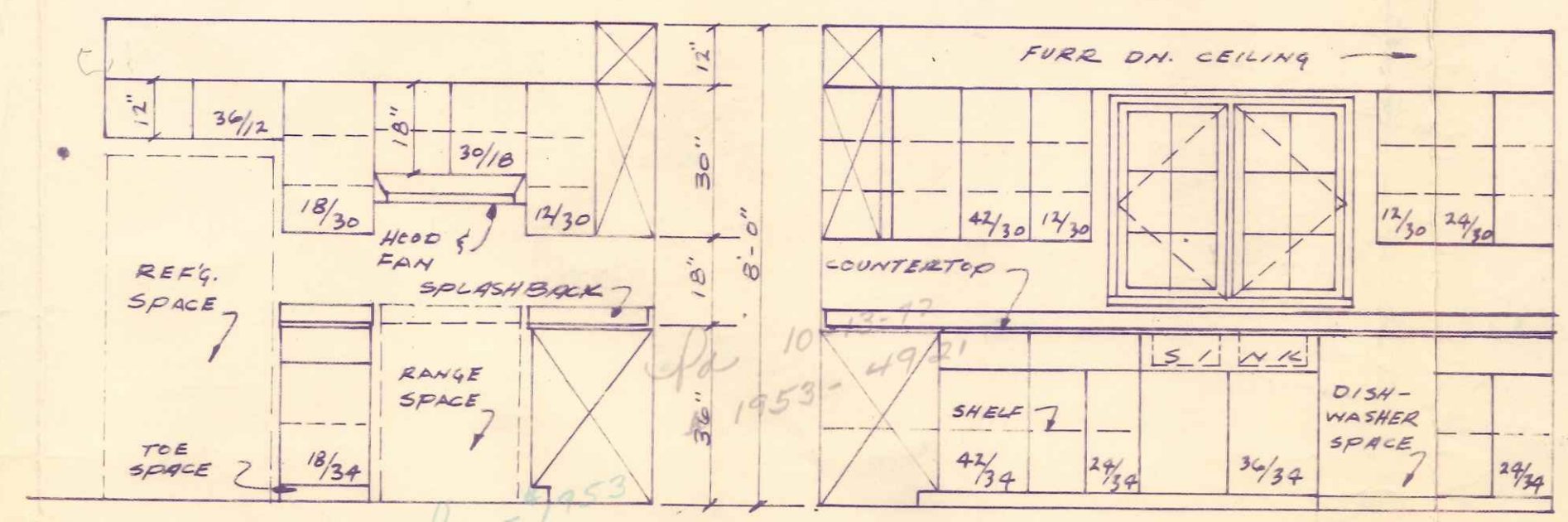
**SECOND FLOOR PLAN** 1030#  
SCALE 1/4" = 1'-0"

**GENERAL NOTES**

- CONFORM TO ALL DIMENSIONS INDICATED ON THE DRAWINGS IN PREFERENCE TO MEASUREMENTS SCALED FROM THE BLUE PRINT PLANS ON THE JOB.
- THE HEATING CONTRACTOR MAY INDICATE UPON THE PLANS THE TYPE OF HEATING SYSTEM TO BE USED.
- DETERMINE THE EXACT CABINET SIZES ON THE JOB AFTER WALL FINISH HAS BEEN APPLIED.
- ALL FRAMING LUMBER LOADS AND SPANS BASED ON THE USE OF #1 DOUGLAS FIR, COAST REGION, OR #1 PINE, SOUTHERN YELLOW OR EQUAL UNLESS OTHERWISE SPECIFIED.
- 2-2" x 12" HEADERS OVER ALL EXTERIOR OPENINGS UNLESS OTHERWISE NOTED.
- THESE PLANS ARE BASED ON THE FOLLOWING LUMBER SIZES
- 2" x 4" = 1 5/8" x 3 5/8"
- 2" x 6" = 1 5/8" x 5 1/2"
- 2" x 8" = 1 5/8" x 7 1/2"
- 2" x 10" = 1 5/8" x 9 1/2"
- 2" x 12" = 1 5/8" x 11 1/2"



**FIRST FLOOR PLAN** 1154#  
SCALE 1/4" = 1'-0"



**KITCHEN CABINET ELEVATIONS**  
SCALE 3/8" = 1'-0"

Total 2184# Liv. Area  
484# Garage  
2668 Total

10 Plumbing Fixtures  
100 110 V outlet  
2 220 V outlet

